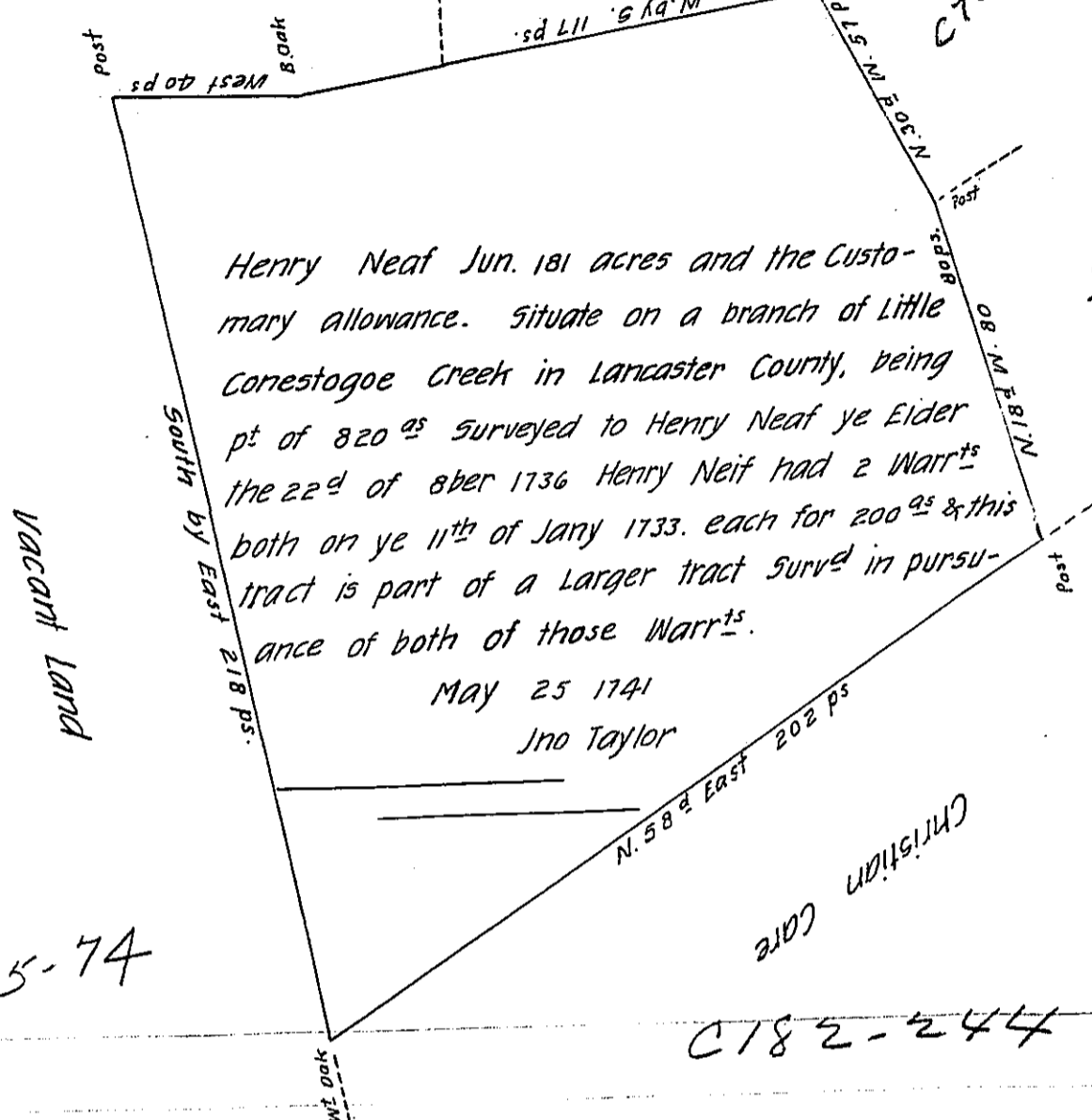


C-224-282

C76-134



Henry Neaf Jun. 181 acres and the Customary allowance. Situate on a branch of Little Conestogoe Creek in Lancaster County, being pt of 820^{as} surveyed to Henry Neaf ye Elder the 22^d of sber 1736 Henry Neif had 2 Warr^{ts} both on ye 11th of Jany 1733. each for 200^{as} & this tract is part of a Larger tract surved in pursuance of both of those Warr^{ts}.

May 25 1741
Jno Taylor

John Neaf
Pg 254

C155-74

C182-244

The 2 Warr^{ts} afores^d were not recited in Henry Neif Jun^{ts} Patent. But another Warr^t was issued the 23^d of June 1741 to accept this survey.

IN TESTIMONY that the above is a copy of the original remaining on file in the Department of Internal Affairs of Pennsylvania, made conformably to an Act of Assembly approved the 16th day of February, 1833, I have hereunto set my Hand and caused the Seal of said Department to be affixed at Harrisburg, this twenty third day of February 1906

Geo. D. Brown
Secretary of Internal Affairs.